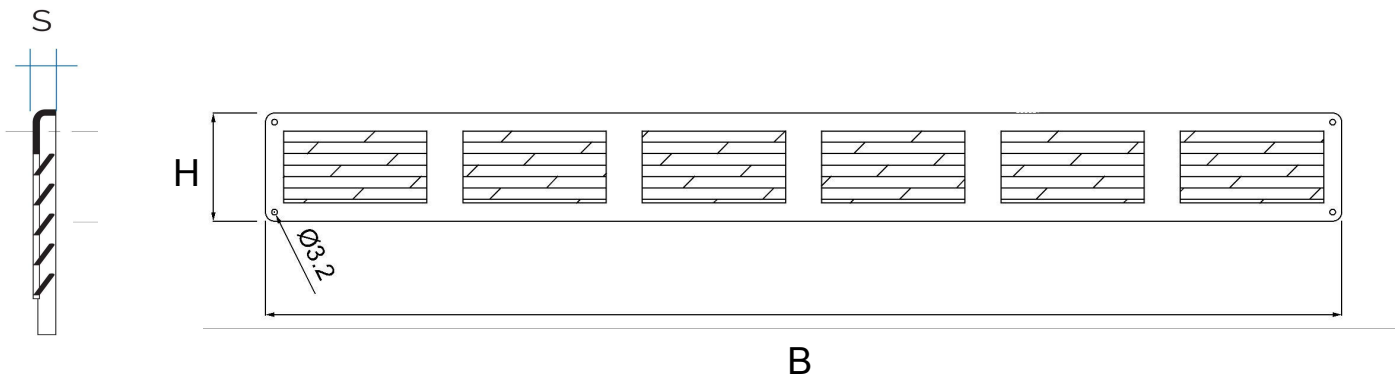





Surface-mounted metal grilles to screw



 = Compatible with saline environments

Item	Colour	BxH mm	S mm	Pass Air cm ²
GL606B	white	600x60	5	120
GL606M	brown	600x60	5	120
GL606G	grey	600x60	5	120
GL606N	black	600x60	5	120
GIN606	inox 430	600x60	5	120
GRA606	copper	600x60	5	120
 GAL606	silver alu.	600x60	5	120
 GZK606	aluzink	600x60	5	120

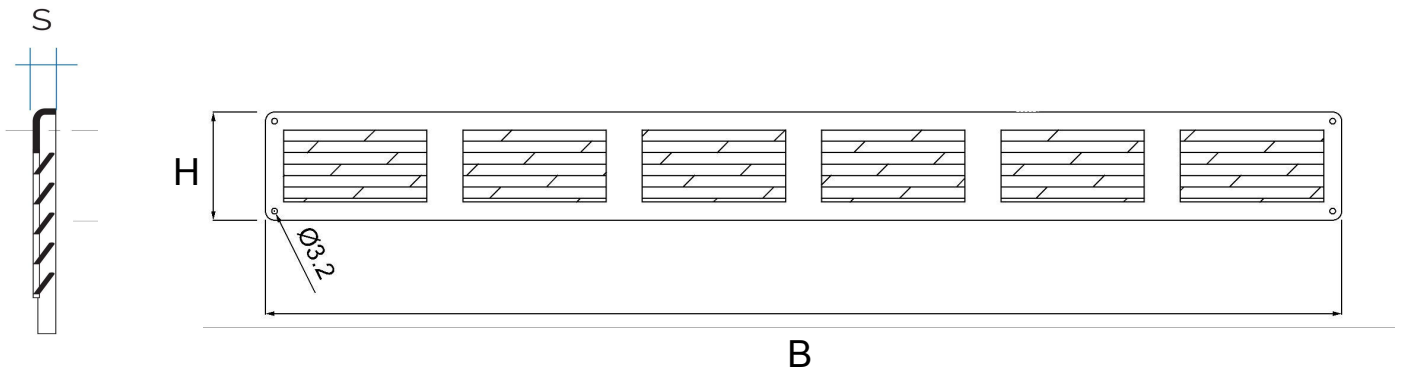
Description: Surface-mounted rectangular ventilation grille


Material: Metal



Features: Rectangular metal ventilation grille, to be surface mounted with screws and plugs. Distance between holes 590x50 mm. It can be installed both indoors and outdoors.



Surface-mounted metal grilles to screw



 = Compatible with saline environments

Item	Colour	BxH mm	S mm	Pass Air cm ²	Insect screen
GL606RB	white	600x60	5	120	✓
GL606RM	brown	600x60	5	120	✓
GL606RG	grey	600x60	5	120	✓
GL606RN	black	600x60	5	120	✓
GIN606R	inox 430	600x60	5	120	✓
GRA606R	copper	600x60	5	120	✓
 GAL606R	silver alu.	600x60	5	120	✓
 GZK606R	aluzink	600x60	5	120	✓

Description: Surface-mounted rectangular ventilation grille

Material: Metal

Features: Rectangular metal ventilation grille, to be surface mounted with screws and plugs, including insect screen. Distance between holes 590x50 mm. It can be installed both indoors and outdoors.

